

NOTE TO VENDORS:

All orders will be produced to the exact quantity specified. Overages will not be automatically produced. Please take this into account and place your order, with required overages, accordingly.

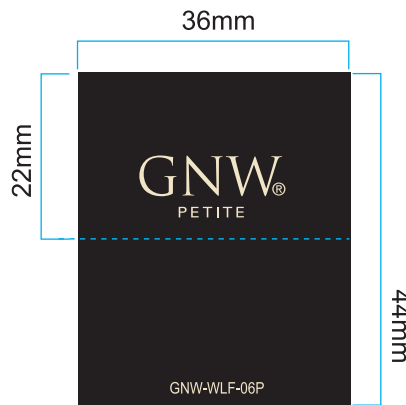
Thank You



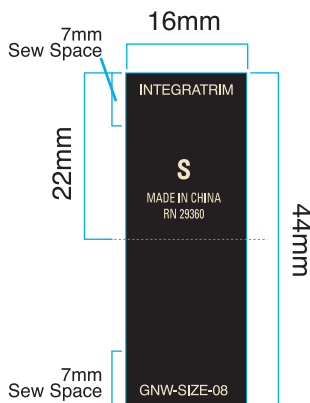
EC-336
GNW-WF-05P
(woven)



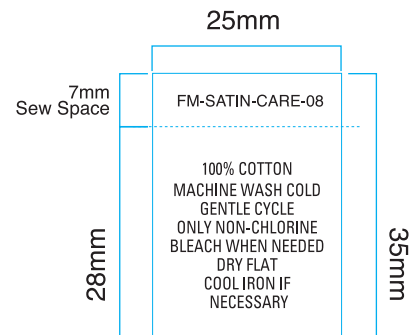
EC-397
GNW-Mitre-06P
(woven)



EC-401
GNW-WLF-06P
(woven)



HG-921W
GNW-Size-08
(woven)



HG-924
FM-Satin-Care-08
(printed)

INTEGRATED HANGTAG IS AVAILABLE NOW AND REQUIRED ON SPRING 2011 MERCHANDISE, HITTING THE SALES FLOOR 12/5/2010 OR LATER.

ANY VENDORS THAT ARE NOT EDI COMPLIANT NEED TO ORDER THIS HANGTAG MANUALLY.



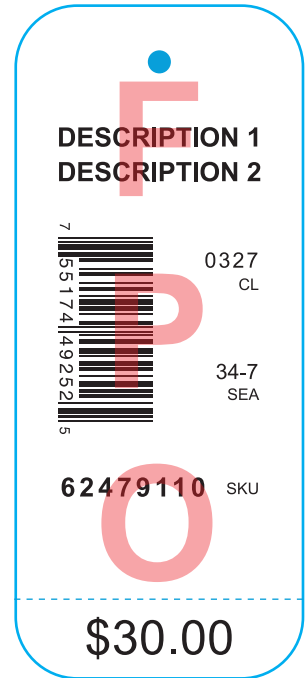
Any Vendors that are not EDI compliant, need to order this hangtag manually. Please see the acquired variable fields below.

- **Descriptor Line** (2nd line is optional)
- **UPC** (standard format and barcode type is UPC-A; vendors will be responsible for notifying all parties if using another UPC type)
- **SKU**
- **Season Code**
- **Class**
- **Retail Price**

HG-EDI-14
& HG-NONEDI-14 →
FOR ALL
MANUAL ORDERS



Front



Back

38mm x 89mm

NOTE TO VENDORS:

Any PO issued after 6/7 or goods that are hitting the floor 12/5 on, and you are not ordering Corporate Branded hangtags, **MUST HAVE THE FOLLOWING PRICE TICKET OR STICKER ORDERED FROM INTEGRATRIM.**

If you are shipping goods that will hit the Sales Floor prior to 12/5 or are using existing inventory in the Pre-Edi hangtag layout, please use one of the below price tickets or stickers to work with your Branded FM hangtag.

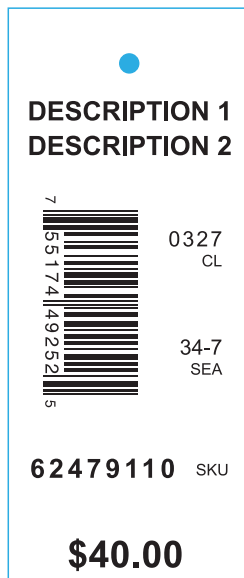


29mm x 83mm



Front & Back

**EC-337
GNW-HT-06P**



32mm x 76mm

**HG-712H
FM-KROGPRICETAG-1**

38mm x 27mm



**HG-3837
FM-Sticker-2**



HG-512 GNW-07TR-P-G



HG-509 GNW-07TR-P-W